

# Highly Potent Side-chain to Side-chain Cyclized Enkephalin Analogues Containing a Carbonyl Bridge: Synthesis, Biology and Conformation

DANUTA PAWLAK<sup>a</sup>, MARTA OLESZCZUK<sup>b</sup>, JACEK WÓJCIK<sup>b</sup>, MARIA PACHULSKA<sup>a</sup>, NGA N. CHUNG<sup>c</sup>, PETER W. SCHILLER<sup>c</sup> and JAN IZDEBSKI<sup>a,\*</sup>

<sup>a</sup> Laboratory of Peptides, Department of Chemistry, University of Warsaw, Warsaw, Poland

<sup>b</sup> Laboratory of Biological NMR, Institute of Biochemistry and Biophysics, Polish Academy of Science, Warsaw, Poland

<sup>c</sup> Laboratory of Chemical Biology and Peptide Research, Clinical Research Institute of Montreal, Montreal, Quebec, Canada

Received 9 August 2000

Accepted 27 September 2000

**Abstract:** Six novel cyclic enkephalin analogues have been synthesized. Cyclization of the linear peptides containing basic amino acid residues in position 2 and 5 was achieved by treatment with bis(4-nitrophenyl)carbonate. It was found that some of the compounds exhibit unusually high  $\mu$ -opioid activity in the guinea pig ileum (GPI) assay. The 18-membered analogue cyclo( $N^{\epsilon},N^{\delta'}$ -carbonyl-D-Lys<sup>2</sup>,Dap<sup>5</sup>)-enkephalinamide turned out to be one of the most potent  $\mu$ -agonists reported so far. NMR spectra of the peptides were recorded and structural parameters were determined. The conformational space was exhaustively examined for each of them using the electrostatically driven Monte Carlo method. Each peptide was finally described as an ensemble of conformations. A model of the bioactive conformation of this class of opioid peptides was proposed. Copyright © 2001 European Peptide Society and John Wiley & Sons, Ltd.

**Keywords:** cyclic opioid peptides; conformation; EDMC; NMR; side-chain to side-chain cyclization; structure–activity relationship; synthesis

## INTRODUCTION

Cyclization of a biologically active lead linear peptide is known to often improve its biological proper-

Abbreviations: EDMC, electrostatically driven Monte Carlo; ECEP-PAK, a program for global conformational analysis of peptides; ECEPP/3, empirical conformational energy program for peptides; SRFOPT, a model of fitting to small-molecule free energy hydration with atomic solvation parameters optimized using nonpeptide thermodynamic data; CLUST, a program for cluster analysis; part of ANALYZE; MORASS, multiple overhauser relaxation analysis and simulation; part of ANALYZE; DSS, 2,2-dimethyl-2-silapentate-sulfonic acid; gHSQC, gradient heteronuclear single quantum coherence spectroscopy; PPJ-HMQC, pure phase homonuclear J-modulated heteronuclear multiple quantum coherence spectroscopy.

\* Correspondence to: Laboratory of Peptides, Department of Chemistry, University of Warsaw, Pasteura 1, Warsaw, 02-093 Poland; e-mail: izdebski@chem.uw.edu.pl

ties, such as metabolic stability, potency and receptor selectivity. Cyclic peptides are expected to adopt conformations that are better defined than those of their linear counterparts which often exist in a conformation equilibrium. Therefore, conformational studies of cyclic peptides may provide insight into the bioactive conformation. Peptides may be cyclized through a variety of functionalities, e.g. a cysteine bridge, lactones, lactams, and at various positions: *N*-terminus to *C*-terminus, *C*-terminus to side chain, *N*-terminus to side chain, *N*-backbone to *C*-terminus or side-chain to side-chain [1]. Recently, we reported the synthesis and biological activity of the first side-chain to side-chain cyclized enkephalin analogue, cyclo( $N^{\epsilon},N^{\delta'}$ -carbonyl-D-Lys<sup>2</sup>,Lys<sup>5</sup>)enkephalinamide **1**, in which ring formation was achieved via a ureido group incorporating the  $\epsilon$  amino group of D-Lys<sup>2</sup> and Lys<sup>5</sup>. This cyclic

enkephalin analogue containing 21-membered ring structure showed preference for  $\mu$  over  $\delta$  opioid receptor in an opioid bioassay *in vitro* [2].

In order to study structure–activity relationships of cyclic enkephalin analogues of this type, we employed an integrated approach, including synthesis, bioassays, NMR spectroscopy and theoretical calculation. We synthesized five new cyclic enkephalin analogues containing a carbonyl bridge using the same method as in the synthesis of **1**: reaction of bis(4-nitrophenyl) carbonate with the linear peptide containing the two unprotected side chain amino groups. The linear peptides contained D-Lys or D-Orn in position 2 and Lys, Orn, Dab ( $\alpha,\gamma$ -diaminobutyric acid) or Dap ( $\alpha,\beta$ -diaminopropionic acid) in position 5. Thus, 17–20 membered cyclic analogues of enkephalin were obtained. We also determined the *in vitro* opioid activity profiles of these peptides, and studied their conformations using NMR and electrostatically driven Monte Carlo (EDMC) calculation.

## MATERIALS AND METHODS

### Synthesis of Peptides

The amino acid derivatives Fmoc-Tyr(*t*-But), Boc-D-Lys[Z(2-Cl)], Boc-Lys[Z(2-Cl)], Boc-D-Orn(Z), Boc-Orn(Z), Boc-Dab(Z):DCHA, Boc-Dap(Z):DCHA were purchased from Bachem, Bubendorf, Switzerland. *N*-cyclohexyl-*N'*-isopropylcarbodiimide (CIC) was prepared as described before [3].

The linear fully protected peptides Fmoc-Tyr(*t*-But)-D-Daa(Z)-Gly-Phe-Daa(Z)-NH<sub>2</sub> were synthesized by the manual solid-phase technique, using a 4-methylbenzhydrylamine resin (0.97 meq/g) according to the following protocol: (1) deprotection with 55% TFA in CH<sub>2</sub>Cl<sub>2</sub> (1 × 1 min, 1 × 15 min), (2) neutralization with 5% DIEA in CH<sub>2</sub>Cl<sub>2</sub> (2 × 2 min), (3) coupling with a mixture of 3 equivalent of the Boc-amino acid (or Fmoc-Tyr(*t*-But)-OH) and 3 equivalent of CIC.

The peptides were cleaved from the resin by treatment with liquid HF in the presence of anisole (10%) for 1 h at 0°C. After removal of the HF, the resins were extracted three times with ether, and subsequently, with 50% acetic acid (4 ×). The water filtrates were combined and lyophilized. Fmoc-protection of the terminal  $\alpha$ -amino group was retained and Z-deprotection of the side-chain amino groups of Daa<sup>2</sup> and Daa<sup>5</sup> residues was achieved. The *t*-Butyl protecting group of the tyrosine hy-

droxyl group was removed prior to cleavage with HF. The crude linear precursors Fmoc-Tyr-D-Daa<sub>1</sub>-Gly-Phe-Daa<sub>2</sub>-NH<sub>2</sub> were cyclized by reaction of bis(4-nitrophenyl)carbonate with the free amino groups of the peptide in DMF. The linear peptide (1 equivalent) was dissolved in DMF (1 mg of peptide/2 cm<sup>3</sup> DMF) and DIEA (2 equivalent) and bis(4-nitrophenyl) carbonate (0.5 + 0.25 + 0.25 + 0.1 = 1.1 equivalent) were added to the solution. The reaction was allowed to continue until free amino groups could no longer be detected (3–4 days), and the solvent was then evaporated under reduced pressure. The residue was triturated with ether.

The crude cyclic peptides were dissolved in 50% piperidine in DMF to remove the *N*-terminal Fmoc group. After 2 h, the solvents were evaporated under the reduced pressure. The residues were triturated with ether, filtrated off and lyophilized from acetic acid. The cyclic analogues **1–6** were purified to homogeneity by semi-preparative reversed-phase high performance liquid chromatography (HPLC) on a Vydac C-18 column (250 × 10 mm), using the following solvent system: A = 0.01% TFA/H<sub>2</sub>O, B = 60% CH<sub>3</sub>CN/A, with detection at 220 nm. Purity of the product was established by analytical HPLC on a Nucleosil column (250 × 7 mm), using a solvent system identical to that used in the semi-preparative HPLC experiments in a linear gradient mode (0–100% B in 30 min) at flow rate of 1 cm<sup>3</sup>/min, with detection at 220 nm. Molecular weights of the obtained analogues were determined by LSIM mass spectrometry. The structural formulas of cyclic peptides **1–6** are presented in Figure 1.

**Bioassay.** The guinea pig ileum (GPI) [4] and mouse vas deferens (MVD) [5] bioassay were carried out as reported in detail elsewhere [6,7]. A log dose–response curve was determined with [Leu<sup>5</sup>]enkephalin as standard for each ileum, and vas preparation and IC<sub>50</sub> values of the compounds being tested were normalized according to a published procedure [8].

**NMR Spectroscopy and Theoretical Analysis.** NMR samples were prepared as described elsewhere [9]. NMR spectra were measured at 20°C on a UNITY500 plus (Varian) spectrometer equipped with a gradient generator unit, Performa II, WFG, Ultra-shims, and high stability temperature unit using a 5 mm <sup>1</sup>H{<sup>13</sup>C/<sup>15</sup>N} PFG triple probe. Spectra were measured using TOCSY [10–12] and ROESY [13,14] experiments under conditions and with parameters described elsewhere [9]. <sup>1</sup>H/<sup>13</sup>C}gHSQC [8–10],

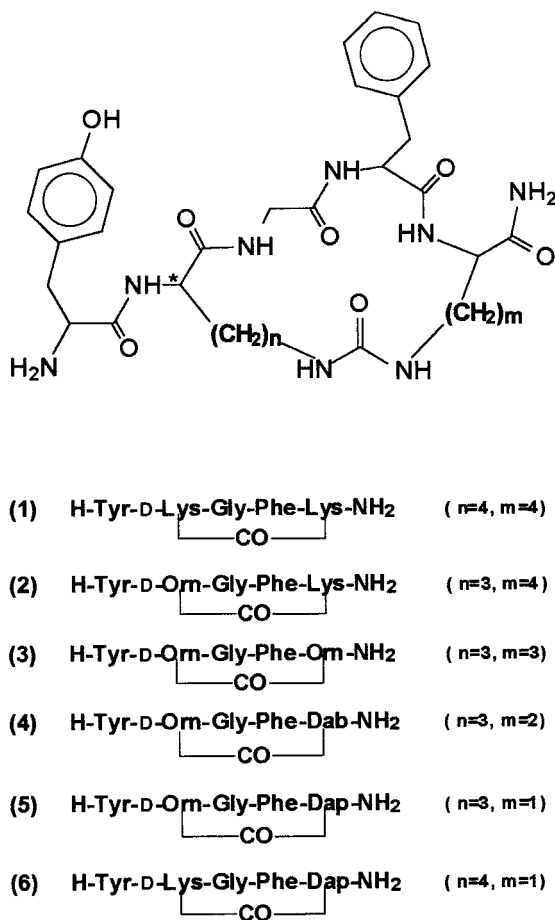


Figure 1 Structural formulas of cyclic analogues of enkephalin containing a carbonyl bridge.

$\{^1\text{H}/^{15}\text{N}\}$ gHSQC [15–17] and/or PPJ-HMQC [18] experiments were performed in some cases. All spectra were analysed using VNMR 5.1A (Varian) software.

All proton NMR spectra in aqueous solution were calibrated against the water signal [19]. Calibration of the correlation spectra was done for the carbon axis using the external DSS reference signal<sup>13</sup> in  $\{^1\text{H}/^{13}\text{C}\}$  spectra and the  $\text{NH}_3$  signal [20] for the nitrogen axis in the  $\{^1\text{H}/^{15}\text{N}\}$  spectra. In  $\text{DMSO}-d_6$  solution, the residual solvent signal was used as a reference [21] in both proton and carbon dimensions.

The conformational space of each peptide **1–6** was explored using the method previously employed by Liwo *et al.* [22], which is an EDMC method [23,24]. In our calculations, we used the ECEPPAK program that started with a conformation of random geometry whose energy was minimized with the ECEPP/3 force field [25] and surface model SRFOPT [26]. The conformation with minimized energy was subse-

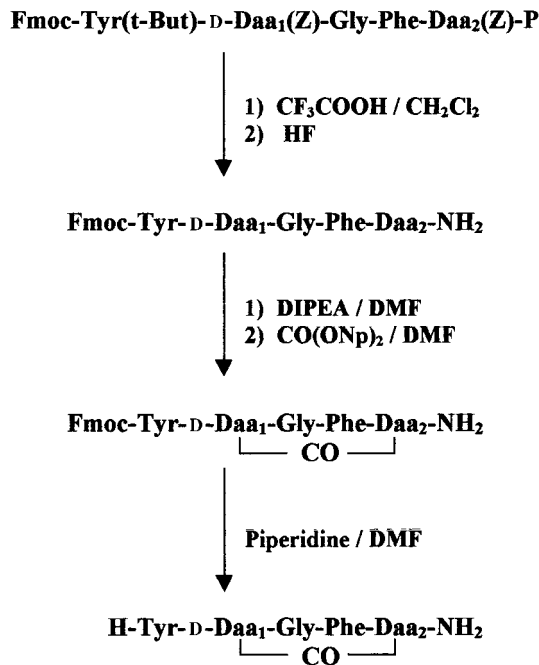
quently perturbed by changing its torsional  $\psi$  and  $\varphi$  angles using the Monte Carlo method [27]. The Piela algorithm [28] was also applied at this stage. The Metropolis criterion [29] was used, when necessary, in the acceptance procedure.

The conformations were subsequently clustered into families by means of the program CLUST [30], using all heavy atoms, and the r.m.s. and energy criterion. The available version of the ECEPPAK program contains solvent parameters for peptide–water interactions. Therefore, conformations generated with parameters accounting for peptide–water interactions were used in comparison with the experimental data obtained for peptide dissolved in water and in  $\text{DMSO}-d_6$  as well.

For the estimation of the population of particular conformations in the conformational ensemble of each peptide the NOESY spectra were generated for representative structures of each family with the program MORASS [31,32], using a correlation time of 0.45 ns, a mixing time corresponding to that used in the experiment and a cutoff value of 6.0 Å. A linear combination of the generated spectra was fitted to the experimental spectrum using the Marquardt method [33]. A convergence criterion value of  $10^{-5}$  was used. A separate term with an additional statistical weight of 0.01 was introduced to account for couplings. In this way, the statistical weights for each of the conformational families were found.

## RESULTS AND DISCUSSION

A combination of the solid-phase technique and classical method in solution was employed for the synthesis of cyclic analogues, as shown in Scheme 1. The linear fully protected peptides Fmoc-Tyr(*t*-But)-D-Daa(Z)-Gly-Phe-Daa(Z)-NH<sub>2</sub> were synthesized by the manual solid-phase technique using *N*-cyclohexyl-*N'*-isopropyl-carbodiimide as coupling reagent. After complete assembly of the peptide chain, the *t*-Butyl protecting group of the hydroxyl group of tyrosine was removed, and the peptide was cleaved from the resin by treatment with liquid HF. Fmoc-protection of the terminal  $\alpha$ -amino group was retained and Z-deprotection of amino groups of side-chains of Daa<sup>2</sup> and Daa<sup>5</sup> residues was achieved. The crude linear peptides Fmoc-Tyr-D-Daa-Gly-Phe-Daa-NH<sub>2</sub> were cyclized by reaction with bis(4-nitrophenyl)carbonate in DMF. After cyclization removal of Fmoc groups were achieved by treatment with 50% piperidine in DMF. The cyclic analogues **1–6** were purified by semi-preparative



Scheme 1 Synthesis of cyclo(*N*<sup>α</sup>,*N*<sup>β'</sup>-carbonyl-D-Lys<sup>2</sup>,Dap<sup>5</sup>)enkephalinamides by a combination of solid-phase and solution methods.

reversed-phase HPLC. Homogeneity of the products was verified by analytical HPLC. Molecular weights of the obtained analogues were determined by LSIM mass spectrometry. NMR spectra of the peptides were measured, and all signals were assigned (Tables 1 and 2).

The *in vitro* opioid activity profile of the analogues was determined in the GPI assay and in the MVD assay (Table 3, Figure 2). All analogues showed higher agonist potency in the GPI assay than in the MVD assay. As it is well established that the MVD preparation contains mostly  $\delta$ -receptors and the GPI preparation largely  $\mu$ -receptors, these results indicate a preference of these analogues for  $\mu$ -receptors over  $\delta$ -receptors. In comparison with [Leu<sup>5</sup>]enkephalin, all analogues showed higher  $\mu$ -agonist potency. The most active peptides contain 17–18 membered rings (Table 3). One of them, **6**, is about 1200 times more active than Leu-enkephalin in the GPI assay, and is one of the most potent  $\mu$ -agonists among the enkephalin analogues reported to date. It could be noticed that its structure is closely related to that of a similar enkephalin analogue cyclized *via* an amide bond (D-Lys<sup>2</sup> with Glu<sup>5</sup>) [34], which also contains an 18-membered ring structure, and was also the most active compound of a series of cyclic lactam analogues. How-

ever, the differences in activity cannot just be explained in terms of ring size variation. For example, compound **6** is about 10 times more potent than **4**, even though both compounds contain an 18-membered ring structure.

Chemical shifts of peptides **1–6** in DMSO-*d*<sub>6</sub> and in water were fully assigned using methods described elsewhere [9] and are listed in Table 1 and Table 2, respectively. The amino acid composition and sequence of each new enkephalin analogue was confirmed using TOCSY and ROESY spectra. The ROESY spectra used for the structure calculation were measured using the 0.2 s mixing time. ROE signal intensities were recalculated to NOE ones according to the equation given by Croasmun and Carlson [35]. Vicinal coupling constants within the peptide in water were measured using 1D proton spectra or the PPJ-HMQC heteronuclear technique (data not shown). The temperature coefficients of the signals of the amide and ureido bridge protons were measured. None of those protons were found to be engaged in hydrogen bonding or to be protected from exchange with solvent protons.

It has been shown that EDMC calculations combined with NMR data provide a useful tool for conformational studies of cyclic peptides, especially because they allow us to search the conformational space effectively, and to describe the flexibility of a peptide in a more quantitative way [22]. The calculation procedure outlined in 'Materials and Methods' yielded a large set of conformational families for each peptide studied. The total number of conformations generated for each peptide varied between 8000 and 15000, and the number of those accepted between 2000 and 3000. The detailed procedure is described in Reference [9]. In the clustering procedure, an r.m.s.d. of 0.10–0.40 Å and a  $\Delta E$  of 10–50 kcal/mol were used. The number of families after clustering varied between 600 and 1060. The total number of NOE contacts used in the analysis was 75 in the case of the DMSO solution, and 63 in the case of the water solution. The NOE spectra allowed the assignment of statistical weights for representative structures of conformational families. The use of coupling constant data did not alter the results and, therefore, we do not report them here. For subsequent analysis, we chose only those conformations whose relative population was higher than 3%. There were 58 such families for all six peptides in DMSO-*d*<sub>6</sub> and 57 in H<sub>2</sub>O. Their populations sum up to *ca* 90% of all conformations in each case. The chosen conformations are shown in Figures 3 and 4. The parameters that characterize the chosen conformations are listed in Table 4.

Table 1 Proton Chemical Shifts of Cyclo ( $N^{\omega},N^{\omega'}$ -carbonyl-D-Daa<sup>2</sup>,Daa<sup>5</sup>)enkephalinamides in DMSO- $d_6$  at 20°C

| Peptide                           | <b>1</b> (Lys <sup>2</sup> ,Lys <sup>5</sup> ) | <b>2</b> (Orn <sup>2</sup> ,Lys <sup>5</sup> ) | <b>3</b> (Orn <sup>2</sup> ,Orn <sup>5</sup> ) | <b>4</b> (Orn <sup>2</sup> ,Dab <sup>5</sup> ) | <b>5</b> (Orn <sup>2</sup> ,Dap <sup>5</sup> ) | <b>6</b> (Lys <sup>2</sup> ,Dap <sup>5</sup> ) |
|-----------------------------------|------------------------------------------------|------------------------------------------------|------------------------------------------------|------------------------------------------------|------------------------------------------------|------------------------------------------------|
| <b>Tyr<sup>1</sup></b>            |                                                |                                                |                                                |                                                |                                                |                                                |
| H <sub>α</sub>                    | 3.78                                           | 3.35                                           | 3.82                                           | 4.00                                           | 3.98                                           | 4.03                                           |
| H <sub>β</sub>                    | 2.81; 2.67                                     | 2.78; 2.44                                     | 2.87; 2.74                                     | 2.83; 2.83                                     | 2.84; 2.82                                     | 2.83; 2.83                                     |
| H <sub>26</sub> ; H <sub>35</sub> | 6.98; 6.66                                     | 6.96; 6.63                                     | 7.02; 6.68                                     | 7.02; 6.73                                     | 7.00; 6.68                                     | 7.00; 6.66                                     |
| H <sub>O</sub>                    | 9.27                                           | 9.19                                           | 9.25                                           | 9.34                                           | 9.31                                           | 9.31                                           |
| <b>D-Daa<sup>2</sup></b>          |                                                |                                                |                                                |                                                |                                                |                                                |
| H <sub>N</sub>                    | 8.19                                           | 7.94                                           | 8.31                                           | 8.47                                           | 8.38                                           | 8.41                                           |
| H <sub>α</sub>                    | 4.24                                           | 4.35                                           | 4.38                                           | 4.56                                           | 4.44                                           | 4.30                                           |
| H <sub>β</sub>                    | 1.42; 1.42                                     | 1.51; 1.40                                     | 1.57; 1.39                                     | 1.36; 1.46                                     | 1.36; 1.48                                     | 1.40; 1.40                                     |
| H <sub>γ</sub>                    | 1.08; 1.08                                     | 1.21; 1.21                                     | 1.19; 1.10                                     | 1.18; 1.05                                     | 1.10; 1.14                                     | 1.05; 1.05                                     |
| H <sub>δ</sub>                    | 1.26; 1.26                                     | 3.00; 2.88                                     | 3.00; 2.87                                     | 3.06; 2.78                                     | 2.94; 2.73                                     | 1.27; 1.27                                     |
| H <sub>ε</sub>                    | 3.06; 2.82                                     | –                                              | –                                              | –                                              | –                                              | 3.02; 2.88                                     |
| <b>Gly<sup>3</sup></b>            |                                                |                                                |                                                |                                                |                                                |                                                |
| H <sub>N</sub>                    | 8.26                                           | 8.10                                           | 8.04                                           | 8.14                                           | 8.29                                           | 8.37                                           |
| H <sub>α</sub>                    | 4.08; 3.38                                     | 3.93; 3.40                                     | 3.98; 3.40                                     | 4.00; 3.53                                     | 4.28; 3.30                                     | 4.23; 3.39                                     |
| <b>Phe<sup>4</sup></b>            |                                                |                                                |                                                |                                                |                                                |                                                |
| H <sub>N</sub>                    | 8.43                                           | 8.25                                           | 8.17                                           | 8.47                                           | 8.35                                           | 8.39                                           |
| H <sub>α</sub>                    | 4.59                                           | 4.43                                           | 4.31                                           | 4.46                                           | 4.30                                           | 4.30                                           |
| H <sub>β</sub>                    | 3.04; 2.75                                     | 2.97; 2.76                                     | 3.04; 2.85                                     | 2.98; 2.80                                     | 3.03; 2.82                                     | 3.00; 2.80                                     |
| H <sub>26</sub> ; H <sub>35</sub> | 7.34; 7.29                                     | 7.28; 7.29                                     | 7.19; 7.25                                     | 7.26; 7.27                                     | 7.26; 7.26                                     | 7.25; 7.25                                     |
| H <sub>4</sub>                    | 7.19                                           | 7.19                                           | 7.23                                           | 7.19                                           | 7.19                                           | 7.18                                           |
| <b>Daa<sup>5</sup></b>            |                                                |                                                |                                                |                                                |                                                |                                                |
| H <sub>N</sub>                    | 8.22                                           | 8.06                                           | 7.83                                           | 7.99                                           | 8.45                                           | 8.32                                           |
| H <sub>α</sub>                    | 4.20                                           | 4.14                                           | 4.15                                           | 4.30                                           | 4.15                                           | 4.25                                           |
| H <sub>β</sub>                    | 1.69; 1.50                                     | 1.66; 1.49                                     | 1.64; 1.44                                     | 1.76; 1.69                                     | 3.50; 3.00                                     | 3.58; 2.86                                     |
| H <sub>γ</sub>                    | 1.28; 1.28                                     | 1.27; 1.27                                     | 1.44; 1.27                                     | 2.96; 2.96                                     | –                                              | –                                              |
| H <sub>δ</sub>                    | 1.32; 1.32                                     | 1.34; 1.34                                     | 2.99; 2.92                                     | –                                              | –                                              | –                                              |
| H <sub>ε</sub>                    | 2.94; 2.94                                     | 2.99; 2.99                                     | –                                              | –                                              | –                                              | –                                              |
| NH <sub>2</sub>                   | 7.00; 7.21                                     | 6.99; 7.02                                     | 6.96; 6.99                                     | 7.06; 7.07                                     | 6.81; 7.15                                     | 6.83; 7.14                                     |
| H <sub>Nbridge</sub>              | 5.66; 5.48                                     | 5.79; 5.64                                     | 5.70; 5.77                                     | 5.89; 5.85                                     | 5.71; 5.88                                     | 5.55; 5.60                                     |

It is well known that the presence of both the Tyr<sup>1</sup> and the Phe<sup>4</sup> residue in enkephalin analogues is required for opioid activity [1]. Therefore, it may be assumed that the conformation of these two residues, as well as the distance between their aromatic rings, is of great importance for the peptide activity. In a cyclic peptide containing the ureido bridge, these conformational factors may be regulated by the size of the main ring. Therefore, in this study, a series of peptides with different size of the main ring structure (17-21 membered) was used. We expected to observe different biological activities and different conformational equilibria within this series.

Inspection of the data presented in Table 4 reveals a large diversity of conformations of the pep-

ptide chain found for each peptide. This is the case for the entire peptide chain, and it applies also for the peptide segment situated between the Phe and Tyr residues, the so-called spacer segment. However, the conformational diversity clearly decreases when one goes from peptide **1** to **6**. This can be seen from inspection of Figures 3 and 4, and it is even more evident from the r.m.s.d. data given in Table 5. This tendency is clear for the r.m.s.d. calculated using heavy atoms of the entire molecule, for the r.m.s.d. calculated using carbon and nitrogen atoms of the main ring and for the r.m.s.d. calculated using heavy atoms of the 'spacer'. Even though the peptide is rather flexible in both solvents, the influence of the solvent type on the

Table 2 Proton Chemical Shifts of Cyclo ( $N^{\omega},N^{\omega'}$ -carbonyl-D-Daa<sup>2</sup>,Daa<sup>5</sup>)enkephalinamides in Water at 20°C

| Peptide                           | <b>1</b> (Lys <sup>2</sup> ,Lys <sup>5</sup> ) | <b>2</b> (Orn <sup>2</sup> ,Lys <sup>5</sup> ) | <b>3</b> (Orn <sup>2</sup> ,Orn <sup>5</sup> ) | <b>4</b> (Orn <sup>2</sup> ,Dab <sup>5</sup> ) | <b>5</b> (Orn <sup>2</sup> ,Dap <sup>5</sup> ) | <b>6</b> (Lys <sup>2</sup> ,Dap <sup>5</sup> ) |
|-----------------------------------|------------------------------------------------|------------------------------------------------|------------------------------------------------|------------------------------------------------|------------------------------------------------|------------------------------------------------|
| <b>Tyr<sup>1</sup></b>            |                                                |                                                |                                                |                                                |                                                |                                                |
| H <sub>α</sub>                    | 4.15                                           | 4.00                                           | 4.13                                           | 4.12                                           | 4.14                                           | 4.13                                           |
| H <sub>β</sub>                    | 3.19; 2.95                                     | 3.12; 2.94                                     | 3.15; 2.92                                     | 3.17; 2.93                                     | 3.16; 2.96                                     | 3.17; 2.96                                     |
| H <sub>26</sub> ; H <sub>35</sub> | 7.11; 6.86                                     | 7.11; 6.85                                     | 7.11; 6.86                                     | 7.11; 6.86                                     | 7.10; 6.84                                     | 7.21; 6.95                                     |
| <b>D-Daa<sup>2</sup></b>          |                                                |                                                |                                                |                                                |                                                |                                                |
| H <sub>N</sub>                    | 8.30                                           | 8.43                                           | 8.45                                           | 8.38                                           | 8.31                                           | 8.25                                           |
| H <sub>α</sub>                    | 4.08                                           | 4.02                                           | 4.03                                           | 4.08                                           | 4.14                                           | 4.18                                           |
| H <sub>β</sub>                    | 1.42; 1.42                                     | 1.45; 1.35                                     | 0.98; 0.98                                     | 1.42; 1.42                                     | 1.38; 1.33                                     | 1.42; 1.31                                     |
| H <sub>γ</sub>                    | 0.93; 0.93                                     | 1.09; 0.90                                     | 3.00; 1.35                                     | 1.17; 0.94                                     | 1.07; 0.97                                     | 1.02; 0.89                                     |
| H <sub>δ</sub>                    | 1.36; 1.36                                     | 2.93; 2.87                                     | 2.99; 2.99                                     | 3.03; 2.83                                     | 2.94; 2.87                                     | 1.31; 1.31                                     |
| H <sub>ε</sub>                    | 3.09; 3.03                                     | -                                              | -                                              | -                                              | -                                              | 3.12; 2.94                                     |
| <b>Gly<sup>3</sup></b>            |                                                |                                                |                                                |                                                |                                                |                                                |
| H <sub>N</sub>                    | 8.26                                           | 8.21                                           | 8.31                                           | 8.35                                           | 8.42                                           | 8.43                                           |
| H <sub>α</sub>                    | 3.99; 3.74                                     | 3.91; 3.65                                     | 4.00; 3.69                                     | 4.10; 3.66                                     | 4.18; 3.60                                     | 4.05; 3.70                                     |
| <b>Phe<sup>4</sup></b>            |                                                |                                                |                                                |                                                |                                                |                                                |
| H <sub>N</sub>                    | 8.28                                           | 8.15                                           | 8.21                                           | 8.13                                           | 8.04                                           | 8.14                                           |
| H <sub>α</sub>                    | 4.54                                           | 4.28                                           | 4.41                                           | 4.45                                           | 4.50                                           | 4.43                                           |
| H <sub>β</sub>                    | 3.05; 3.02                                     | 3.01; 2.92                                     | 3.02; 2.95                                     | 3.07; 2.97                                     | 3.09; 2.96                                     | 3.09; 2.94                                     |
| H <sub>26</sub> ; H <sub>35</sub> | 7.35; 7.26                                     | 7.24; 7.34                                     | 7.22; 7.33                                     | 7.22; 7.34                                     | 7.20; 7.32                                     | 7.33; 7.44                                     |
| H <sub>4</sub>                    | 7.29                                           | 7.29                                           | 7.29                                           | 7.29                                           | 7.28                                           | 7.39                                           |
| <b>Daa<sup>5</sup></b>            |                                                |                                                |                                                |                                                |                                                |                                                |
| H <sub>N</sub>                    | 8.27                                           | 8.12                                           | 8.07                                           | 8.32                                           | 8.23                                           | 8.23                                           |
| H <sub>α</sub>                    | 4.16                                           | 4.03                                           | 4.15                                           | 4.29                                           | 4.36                                           | 4.33                                           |
| H <sub>β</sub>                    | 1.72; 1.59                                     | 1.69; 1.57                                     | 1.46; 1.46                                     | 1.90; 1.70                                     | 3.48; 3.11                                     | 3.56; 2.98                                     |
| H <sub>γ</sub>                    | 1.35; 1.26                                     | 1.30; 1.21                                     | 1.68; 1.29                                     | 3.11; 3.03                                     | -                                              | -                                              |
| H <sub>δ</sub>                    | 1.44; 1.36                                     | 1.37; 1.37                                     | 2.99; 2.99                                     | -                                              | -                                              | -                                              |
| H <sub>ε</sub>                    | 3.05; 3.05                                     | 3.00; 3.00                                     | -                                              | -                                              | -                                              | -                                              |
| NH <sub>2</sub>                   | 6.91; 6.59                                     | 6.93; 6.55                                     | 6.90; 6.42                                     | 6.95; 6.53                                     | 6.98; 6.69                                     | 7.02; 6.64                                     |

Table 3 GPI and MVD Assay of Cyclic Opioid-peptide Analogues Cyclo( $N^{\omega},N^{\omega'}$ -carbonyl-D-Daa<sup>2</sup>,Daa<sup>5</sup>)enkephalinamides

| Compound               | Ring size        |                  | GPI                                |                         | MVD                                |                         | MVD/GPI IC <sub>50</sub> ratio |       |
|------------------------|------------------|------------------|------------------------------------|-------------------------|------------------------------------|-------------------------|--------------------------------|-------|
|                        | Daa <sup>2</sup> | Daa <sup>5</sup> | IC <sub>50</sub> [nM] <sup>a</sup> | Rel. potency            | IC <sub>50</sub> [nM] <sup>a</sup> | Rel. potency            |                                |       |
| <b>1</b>               | Lys              | Lys              | 21                                 | 20.5 ± 2.1 <sup>b</sup> | 12.0 ± 1.2                         | 73.5 ± 4.3 <sup>b</sup> | 0.155 ± 0.009                  | 3.59  |
| <b>2</b>               | Orn              | Lys              | 20                                 | 10.6 ± 1.2              | 23.2 ± 2.6                         | 41.3 ± 10.8             | 0.276 ± 0.072                  | 3.90  |
| <b>3</b>               | Orn              | Orn              | 19                                 | 4.68 ± 0.70             | 52.6 ± 7.9                         | 20.2 ± 5.7              | 0.564 ± 0.159                  | 4.32  |
| <b>4</b>               | Orn              | Dab              | 18                                 | 2.05 ± 0.09             | 120 ± 5                            | 8.70 ± 0.20             | 1.31 ± 0.03                    | 4.24  |
| <b>5</b>               | Orn              | Dap              | 17                                 | 1.64 ± 0.46             | 150 ± 42                           | 12.5 ± 1.0              | 0.912 ± 0.073                  | 7.62  |
| <b>6</b>               | Lys              | Dap              | 18                                 | 0.212 ± 0.01            | 1160 ± 55                          | 0.651 ± 0.015           | 17.5 ± 0.04                    | 3.07  |
| [Leu <sup>5</sup> ]enk |                  |                  |                                    | 246 ± 39                | 1                                  | 11.4 ± 1.1              | 1                              | 0.046 |

<sup>a</sup> Mean of 3-4 determination ± S.E.M.<sup>b</sup> Reference [2].

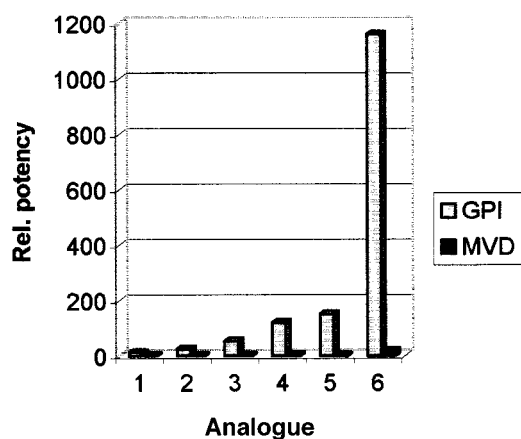


Figure 2 GPI and MVD assay of cyclic opioid-peptides **1–6**. Potencies are indicated relative to that of [Leu<sup>5</sup>]enkephalin (potency = 1).

conformation flexibility is also evident in the series. It is obvious that water strongly diminishes the conformational diversity.

We calculated the distance between the centres of the two aromatic ring for each conformation. The data are shown in Figure 5 and Table 4. It is evident that the biologically most active peptide **6** has mostly conformations with a large intraring distance. We also calculated Euler angles between aromatic rings, but the orientation of the rings appeared not to be significant.

Analysis of the data in Table 4 for the most active peptide **6** determined in water indicated that the most populated conformers of the peptide are rather similar to each other. In particular, this is the case for the torsional angles of the 'spacer'. This led to the conclusion that the proper conformation of the

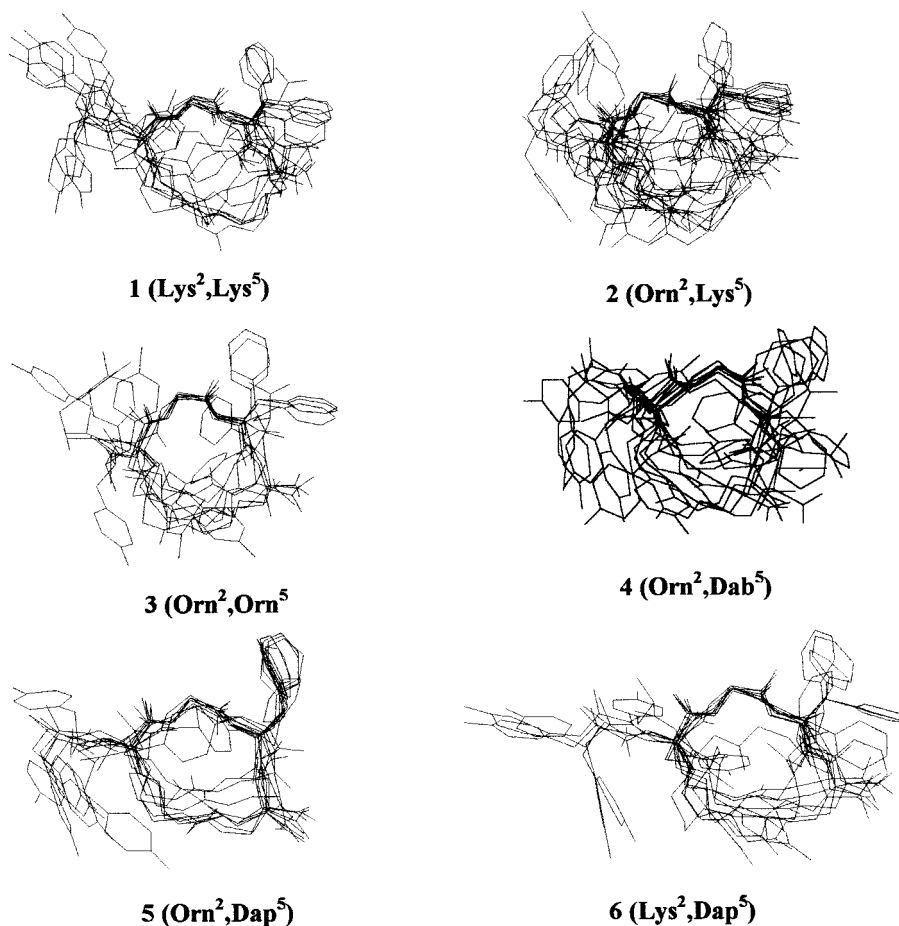


Figure 3 MOLMOL [36] drawings of conformations with a relative population above 3% in DMSO-*d*<sub>6</sub>. The structures are aligned using heavy atoms of the 'spacer' between tyrosine and phenylalanine.

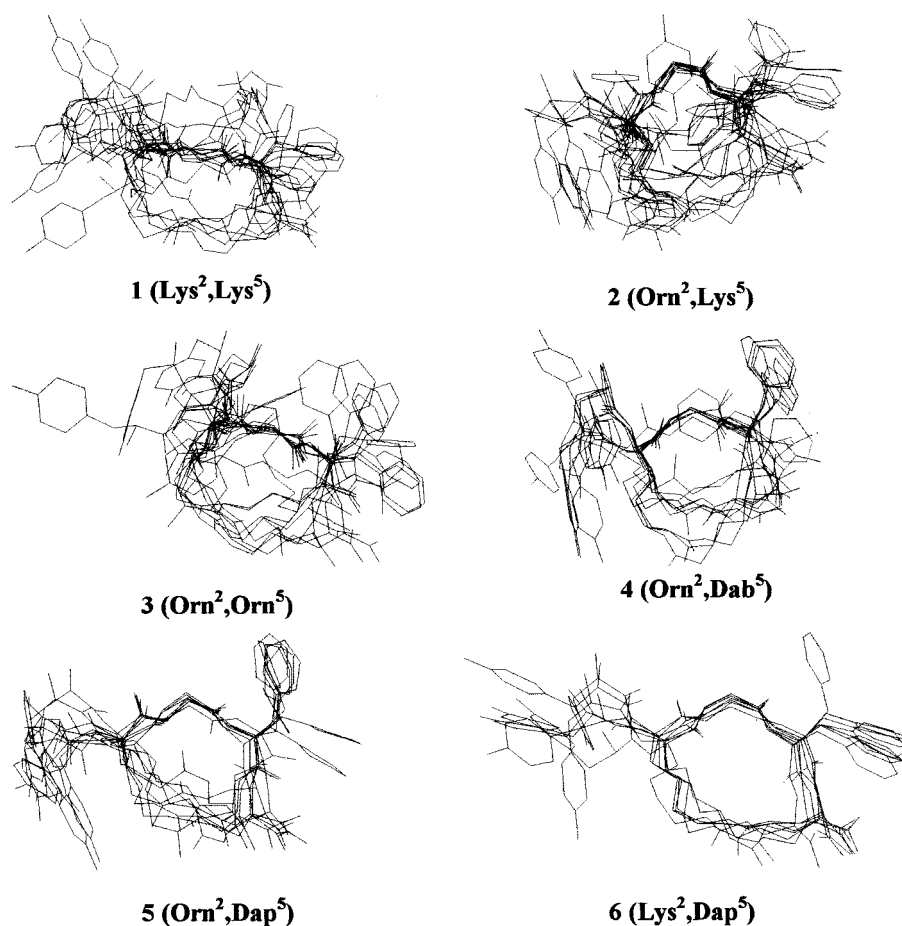


Figure 4 MOLMOL [36] drawings of conformations with relative population above 3% in H<sub>2</sub>O. The structures are aligned using heavy atoms of the 'spacer' between tyrosine and phenylalanine.

'spacer' is also important for the very high biological activity observed for peptide **6**. It is very probable that the most populated conformations of analogue **6** closely resemble its bioactive conformation. The proposed bioactive conformation is shown in Figure 6.

Among the conformations of the other peptides examined, only very few have a conformation similar to that which is predominant in the case of **6**. This observation, combined with the information on the distance between the aromatic rings, seems to correlate well with the variation in biological activity observed within this series of compounds. The diagram shown on Figure 7 correlates the distances between the aromatic rings calculated for each analysed conformation with the r.m.s.d. calculated for torsional angles of the 'spacer', using angles of the 'ideal' conformation as a reference. One may see that two families of conformations may be distin-

guished on this basis. The reference conformers of peptide **6** all fall in the family with small 'spacer' angles r.m.s.d.. This is also true for conformers of the peptide **5**. The conformers of peptide **4**, **3** and **2** share families with both small and large r.m.s.d. values, with an increasingly larger proportion of families with large r.m.s.d. values. This trend is accompanied by a decrease of the distance between the aromatic rings. From that picture, one may conclude that the distance between rings and the conformation of the 'spacer', both affect the activity of the peptide. The conformational and behaviour of peptide **1** is different, and may be explained in terms of a much larger structural flexibility of its 'spacer'. Its r.m.s.d. value is much higher than that observed with the other peptides in water. Therefore, one may assume that, in the case of this peptide, the entropic effect may already be significant, and may be the reason for its relatively low biological activity.



Table 4 Parameters for the Most Populated Conformations (with Populations above 3%) Found in Water

|                                            | $\chi_1(1)$ | $\psi(1)$ | $\varphi(2)$ | $\psi(2)$   | $\varphi(3)$ | $\psi(3)$   | $\varphi(4)$ | $\chi_1(4)$ | r    | en  | pop  |
|--------------------------------------------|-------------|-----------|--------------|-------------|--------------|-------------|--------------|-------------|------|-----|------|
| <b>1 (Lys<sup>2</sup>,Lys<sup>5</sup>)</b> |             |           |              |             |              |             |              |             |      |     |      |
| 1w-1                                       | -180        | 153       | 76           | <b>25</b>   | <b>180</b>   | <b>60</b>   | <b>-86</b>   | -63         | 10.8 | 0.0 | 17.3 |
| 1w-2                                       | -176        | 155       | 75           | <b>41</b>   | <b>179</b>   | <b>59</b>   | <b>-112</b>  | 57          | 16.8 | 5.8 | 16.0 |
| 1w-3                                       | -66         | -37       | 147          | <b>-136</b> | <b>156</b>   | <b>-141</b> | <b>-154</b>  | -179        | 16.2 | 3.0 | 10.7 |
| 1w-4                                       | -174        | 155       | 76           | <b>46</b>   | <b>-146</b>  | <b>33</b>   | <b>-115</b>  | -50         | 13.1 | 4.3 | 9.7  |
| 1w-5                                       | -64         | 150       | 148          | <b>-104</b> | <b>173</b>   | <b>-150</b> | <b>-146</b>  | 179         | 13.0 | 3.3 | 9.7  |
| 1w-6                                       | -66         | -38       | 147          | <b>-119</b> | <b>151</b>   | <b>-39</b>  | <b>-89</b>   | -59         | 14.2 | 5.9 | 7.9  |
| 1w-7                                       | -71         | -42       | 72           | <b>52</b>   | <b>-157</b>  | <b>-54</b>  | <b>-78</b>   | -59         | 13.7 | 5.5 | 5.3  |
| 1w-8                                       | 58          | 11        | 156          | <b>57</b>   | <b>171</b>   | <b>60</b>   | <b>-100</b>  | -49         | 12.4 | 7.0 | 4.9  |
| 1w-9                                       | -60         | -39       | 152          | <b>-148</b> | <b>85</b>    | <b>46</b>   | <b>-160</b>  | 174         | 13.1 | 5.7 | 4.2  |
| 1w-10                                      | -63         | -37       | 136          | <b>-31</b>  | <b>-149</b>  | <b>77</b>   | <b>-140</b>  | 64          | 15.2 | 4.4 | 4.0  |
| 1w-11                                      | -63         | -36       | 79           | <b>28</b>   | <b>-179</b>  | <b>-59</b>  | <b>-77</b>   | -176        | 13.2 | 6.3 | 3.3  |
| <b>2 (Orn<sup>2</sup>,Lys<sup>5</sup>)</b> |             |           |              |             |              |             |              |             |      |     |      |
| 2w-1                                       | -65         | 154       | 77           | <b>39</b>   | <b>81</b>    | <b>-74</b>  | <b>-162</b>  | 62          | 12.6 | 3.8 | 24.7 |
| 2w-2                                       | -173        | 141       | 77           | <b>35</b>   | <b>73</b>    | <b>-38</b>  | <b>-160</b>  | 180         | 12.7 | 3.9 | 13.8 |
| 2w-3                                       | -169        | 131       | 117          | <b>-32</b>  | <b>-82</b>   | <b>-39</b>  | <b>-158</b>  | 179         | 10.3 | 2.2 | 10.8 |
| 2w-4                                       | 179         | 136       | 82           | <b>-141</b> | <b>81</b>    | <b>19</b>   | <b>-92</b>   | -179        | 11.1 | 9.8 | 10.6 |
| 2w-5                                       | -176        | 139       | 81           | <b>-159</b> | <b>167</b>   | <b>-91</b>  | <b>-161</b>  | -179        | 14.9 | 4.4 | 9.1  |
| 2w-6                                       | -176        | 145       | 83           | <b>35</b>   | <b>-162</b>  | <b>-55</b>  | <b>-141</b>  | 179         | 11.4 | 1.0 | 5.2  |
| 2w-7                                       | -179        | 138       | 80           | <b>-141</b> | <b>81</b>    | <b>21</b>   | <b>-95</b>   | -179        | 11.2 | 5.7 | 5.1  |
| 2w-8                                       | 179         | 118       | -56          | <b>-34</b>  | <b>-73</b>   | <b>-13</b>  | <b>-68</b>   | -174        | 8.0  | 3.7 | 4.7  |
| 2w-9                                       | -178        | 109       | 157          | <b>54</b>   | <b>158</b>   | <b>58</b>   | <b>-119</b>  | 54          | 5.1  | 0.0 | 4.4  |
| 2w-10                                      | -66         | 154       | 78           | <b>36</b>   | <b>-138</b>  | <b>27</b>   | <b>-94</b>   | -52         | 6.5  | 3.0 | 4.0  |
| <b>3 (Orn<sup>2</sup>,Orn<sup>5</sup>)</b> |             |           |              |             |              |             |              |             |      |     |      |
| 3w-1                                       | -169        | 163       | 84           | <b>20</b>   | <b>-174</b>  | <b>-54</b>  | <b>-123</b>  | -63         | 11.0 | 2.9 | 18.0 |
| 3w-2                                       | -68         | 103       | 154          | <b>-138</b> | <b>161</b>   | <b>-49</b>  | <b>-94</b>   | -56         | 14.5 | 4.8 | 15.6 |
| 3w-3                                       | -178        | 167       | 77           | <b>37</b>   | <b>180</b>   | <b>50</b>   | <b>-158</b>  | 177         | 9.6  | 1.8 | 13.4 |
| 3w-4                                       | -179        | 141       | 79           | <b>25</b>   | <b>-152</b>  | <b>31</b>   | <b>-102</b>  | -177        | 9.6  | 2.4 | 9.8  |
| 3w-5                                       | -62         | 141       | 84           | <b>32</b>   | <b>-140</b>  | <b>-58</b>  | <b>-146</b>  | -60         | 6.1  | 2.5 | 8.6  |
| 3w-6                                       | -174        | 143       | 78           | <b>28</b>   | <b>-95</b>   | <b>-66</b>  | <b>-159</b>  | 178         | 11.5 | 2.4 | 4.7  |
| 3w-7                                       | -177        | 158       | 73           | <b>24</b>   | <b>-179</b>  | <b>-52</b>  | <b>-135</b>  | 57          | 11.2 | 9.0 | 4.5  |
| 3w-8                                       | -176        | 136       | 86           | <b>-139</b> | <b>90</b>    | <b>-70</b>  | <b>-139</b>  | 180         | 13.6 | 3.5 | 4.3  |
| 3w-9                                       | -177        | 138       | 85           | <b>36</b>   | <b>-149</b>  | <b>-61</b>  | <b>-146</b>  | -64         | 11.4 | 0.0 | 3.6  |
| 3w-10                                      | -174        | -36       | 152          | <b>61</b>   | <b>-159</b>  | <b>44</b>   | <b>-97</b>   | 178         | 11.9 | 1.9 | 3.4  |
| <b>4 (Orn<sup>2</sup>,Dab<sup>5</sup>)</b> |             |           |              |             |              |             |              |             |      |     |      |
| 4w-1                                       | -176        | 155       | 76           | <b>42</b>   | <b>-142</b>  | <b>37</b>   | <b>-91</b>   | -175        | 9.7  | 2.2 | 22.0 |
| 4w-2                                       | -64         | 154       | 78           | <b>37</b>   | <b>-92</b>   | <b>-52</b>  | <b>-160</b>  | 53          | 10.6 | 2.8 | 14.2 |
| 4w-3                                       | -176        | 139       | 82           | <b>-155</b> | <b>87</b>    | <b>-75</b>  | <b>-132</b>  | -63         | 12.9 | 3.3 | 13.0 |
| 4w-4                                       | -177        | 154       | 88           | <b>-138</b> | <b>155</b>   | <b>-153</b> | <b>-84</b>   | -60         | 13.6 | 3.9 | 10.0 |
| 4w-5                                       | -172        | 143       | 94           | <b>-162</b> | <b>77</b>    | <b>-78</b>  | <b>-119</b>  | -63         | 12.5 | 6.9 | 8.8  |
| 4w-6                                       | -174        | 138       | 85           | <b>-159</b> | <b>87</b>    | <b>-80</b>  | <b>-137</b>  | -63         | 12.9 | 3.1 | 8.6  |
| 4w-7                                       | -178        | 154       | 77           | <b>43</b>   | <b>-155</b>  | <b>50</b>   | <b>-108</b>  | -50         | 5.5  | 3.6 | 3.8  |
| 4w-8                                       | -175        | 154       | 77           | <b>37</b>   | <b>-92</b>   | <b>-52</b>  | <b>-161</b>  | 53          | 9.9  | 0.0 | 3.3  |
| 4w-9                                       | -178        | 141       | 75           | <b>32</b>   | <b>-94</b>   | <b>-64</b>  | <b>-138</b>  | -62         | 12.4 | 3.9 | 3.3  |
| 4w-10                                      | -177        | 141       | 78           | <b>34</b>   | <b>-97</b>   | <b>-76</b>  | <b>-141</b>  | -62         | 12.5 | 3.4 | 3.1  |
| <b>5 (Orn<sup>2</sup>,Dap<sup>5</sup>)</b> |             |           |              |             |              |             |              |             |      |     |      |
| 5w-1                                       | -177        | 115       | 154          | <b>-154</b> | <b>98</b>    | <b>-98</b>  | <b>-141</b>  | -64         | 12.9 | 9.5 | 25.7 |
| 5w-2                                       | -179        | 154       | 84           | <b>-134</b> | <b>179</b>   | <b>-74</b>  | <b>-154</b>  | 179         | 14.5 | 1.9 | 22.6 |
| 5w-3                                       | -178        | 154       | 84           | <b>-132</b> | <b>140</b>   | <b>-93</b>  | <b>-139</b>  | -64         | 13.1 | 2.4 | 11.5 |
| 5w-4                                       | -175        | 159       | 79           | <b>-107</b> | <b>170</b>   | <b>-64</b>  | <b>-137</b>  | -55         | 12.6 | 2.8 | 10.3 |

Table 4 (Continued)

|                                            | $\chi_1(1)$ | $\psi(1)$ | $\varphi(2)$ | $\psi(2)$   | $\varphi(3)$ | $\psi(3)$   | $\varphi(4)$ | $\chi_1(4)$ | r    | en  | pop  |
|--------------------------------------------|-------------|-----------|--------------|-------------|--------------|-------------|--------------|-------------|------|-----|------|
| <b>5w-5</b>                                | -179        | 154       | 85           | <b>-77</b>  | <b>94</b>    | <b>-83</b>  | <b>-135</b>  | -64         | 12.6 | 1.2 | 5.9  |
| <b>5w-6</b>                                | 178         | 139       | 154          | <b>-112</b> | <b>170</b>   | <b>-84</b>  | <b>-98</b>   | -56         | 12.2 | 1.8 | 5.6  |
| <b>5w-7</b>                                | -173        | 135       | 156          | <b>-162</b> | <b>170</b>   | <b>-89</b>  | <b>-127</b>  | 55          | 10.8 | 2.5 | 4.6  |
| <b>5w-8</b>                                | -177        | 125       | 155          | <b>-169</b> | <b>158</b>   | <b>-143</b> | <b>-116</b>  | -56         | 13.2 | 0.0 | 4.5  |
| <b>5w-9</b>                                | -176        | 155       | 86           | <b>-147</b> | <b>79</b>    | <b>-69</b>  | <b>-158</b>  | 179         | 12.1 | 5.1 | 3.4  |
| <b>6 (Lys<sup>2</sup>,Dap<sup>5</sup>)</b> |             |           |              |             |              |             |              |             |      |     |      |
| <b>6w-1</b>                                | -68         | 136       | 146          | <b>-101</b> | <b>87</b>    | <b>-92</b>  | <b>-158</b>  | 179         | 16.6 | 6.8 | 24.1 |
| <b>6w-2</b>                                | 63          | 163       | 80           | <b>-155</b> | <b>92</b>    | <b>-81</b>  | <b>-153</b>  | 178         | 15   | 2.0 | 17.0 |
| <b>6w-3</b>                                | -64         | 152       | 83           | <b>-136</b> | <b>172</b>   | <b>-104</b> | <b>-157</b>  | 176         | 17.2 | 1.3 | 16.2 |
| <b>6w-4</b>                                | -64         | 152       | 83           | <b>-136</b> | <b>100</b>   | <b>-98</b>  | <b>-159</b>  | 177         | 16.7 | 2.7 | 11.8 |
| <b>6w-5</b>                                | 68          | 170       | 80           | <b>-138</b> | <b>167</b>   | <b>-137</b> | <b>-129</b>  | -62         | 11.7 | 2.5 | 10.9 |
| <b>6w-6</b>                                | -66         | 142       | 146          | <b>-134</b> | <b>126</b>   | <b>-106</b> | <b>-154</b>  | 178         | 17.3 | 1.8 | 7.8  |
| <b>6w-7</b>                                | -175        | 154       | 83           | <b>-143</b> | <b>144</b>   | <b>-86</b>  | <b>-154</b>  | -179        | 14.5 | 0.0 | 3.1  |

Values of selected torsional angles for the Tyr-Phe 'spacer', distance between tyrosine and phenylalanine ring centres (r in Å), relative calculated energy (en in kcal/mol) and relative populations of conformers (pop in %). Torsional angles of the 'spacer' are given in bold.

Table 5 R.m.s.d. (in Å) Calculated for the Conformations with the Relative Population above 3%

|                                          | <b>1 (Lys<sup>2</sup>,Lys<sup>5</sup>)</b> | <b>2 (Orn<sup>2</sup>,Lys<sup>5</sup>)</b> | <b>3 (Orn<sup>2</sup>,Orn<sup>5</sup>)</b> | <b>4 (Orn<sup>2</sup>,Dab<sup>5</sup>)</b> | <b>5 (Orn<sup>2</sup>,Dap<sup>5</sup>)</b> | <b>6 (Lys<sup>2</sup>,Dap<sup>5</sup>)</b> |
|------------------------------------------|--------------------------------------------|--------------------------------------------|--------------------------------------------|--------------------------------------------|--------------------------------------------|--------------------------------------------|
| DMSO- <i>d</i> <sub>6</sub> <sup>a</sup> | 2.23                                       | 2.33                                       | 2.51                                       | 2.04                                       | 1.65                                       | 2.10                                       |
| H <sub>2</sub> O <sup>a</sup>            | 1.93                                       | 2.16                                       | 1.93                                       | 1.65                                       | 1.50                                       | 1.45                                       |
| DMSO- <i>d</i> <sub>6</sub> <sup>b</sup> | 0.97                                       | 0.87                                       | 0.76                                       | 0.81                                       | 0.65                                       | 0.76                                       |
| H <sub>2</sub> O <sup>b</sup>            | 0.99                                       | 0.83                                       | 0.79                                       | 0.71                                       | 0.82                                       | 0.61                                       |
| DMSO- <i>d</i> <sub>6</sub> <sup>c</sup> | 0.33                                       | 0.33                                       | 0.27                                       | 0.39                                       | 0.27                                       | 0.23                                       |
| H <sub>2</sub> O <sup>c</sup>            | 0.47                                       | 0.33                                       | 0.23                                       | 0.32                                       | 0.23                                       | 0.22                                       |

<sup>a</sup> r.m.s.d. calculated using all heavy atoms.

<sup>b</sup> r.m.s.d. calculated using carbon and nitrogen atoms of main ring.

<sup>c</sup> r.m.s.d. calculated for tyrosine-phenylalanine 'spacer' only, using seven heavy atoms of the backbone: carbon atoms C<sub>α</sub> and C<sub>β</sub> of the residue D-Daa<sup>2</sup>; N, C<sub>α</sub>, C<sub>β</sub> of Gly<sup>3</sup>; and N, C<sub>α</sub> of Phe<sup>4</sup>.

## CONCLUSION

Six novel cyclic enkephalin analogues have been synthesized. The cyclization was accomplished by incorporation of the side-chain amino group of various basic amino acids in position 2 (D-Lys, D-Orn) and 5 (Lys, Orn, Dab, Dap) into a urea residue. All analogues showed higher opioid activity than the previously prepared 21-membered cyclo(*N*<sup>ε</sup>,*N*<sup>ω</sup>-carbonyl-D-Lys<sup>2</sup>, Lys<sup>5</sup>)enkephalinamide. Compound **6**, containing an 18-membered ring, showed 1160 times higher  $\mu$ -agonist potency than [Leu<sup>5</sup>]-enkephalin. It is one of the most potent  $\mu$ -agonist reported to date. The distribution of conformations arrived at from NMR measurements, and theoretical calculations indicate that the conformational freedom is clearly more restricted in aqueous solution

than in DMSO solution. This is especially the case for the most active peptide **6**. The highly populated conformation of **6**, in which the two aromatic side-chains are oriented in opposite directions from one another with a 14–18 Å separation is likely to closely resemble the bioactive conformation at the  $\mu$ -receptor (Figure 6).

Additional tables are available on request from JW (jacekw@ibb.waw.pl).

- (A) Number of conformations generated (a) and accepted (b) for each cyclo(*N*<sup>ω</sup>,*N*<sup>ω'</sup>-carbonyl-D-Daa<sup>2</sup>,Daa<sup>5</sup>)enkephalinamide.
- (B) Parameters used in clustering procedure and numbers of families of conformations found for each cyclo(*N*<sup>ω</sup>,*N*<sup>ω'</sup>-carbonyl-D-Daa<sup>2</sup>,Daa<sup>5</sup>)enkephalinamide.

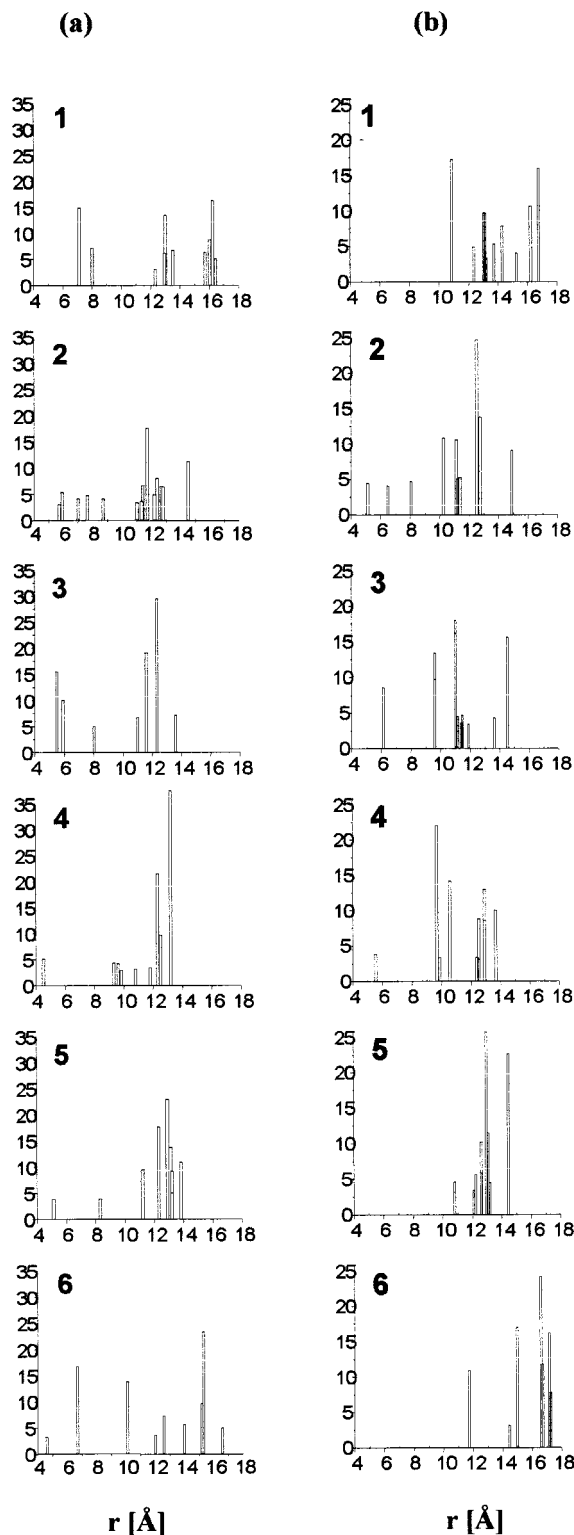


Figure 5 Distribution of the distances between the centres of the tyrosine and phenylalanine aromatic rings in conformations with a relative population above 3%. The height of the bars reflects the relative population. (a) in DMSO- $d_6$ , (b) in water.

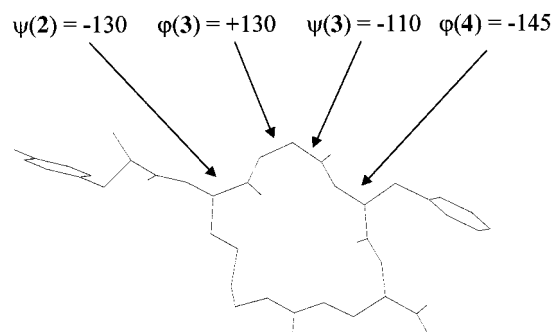


Figure 6 MOLMOL [36] drawing of the conformation which is likely to be the biologically active one. Mean torsional angles of part of the main chain are specified.

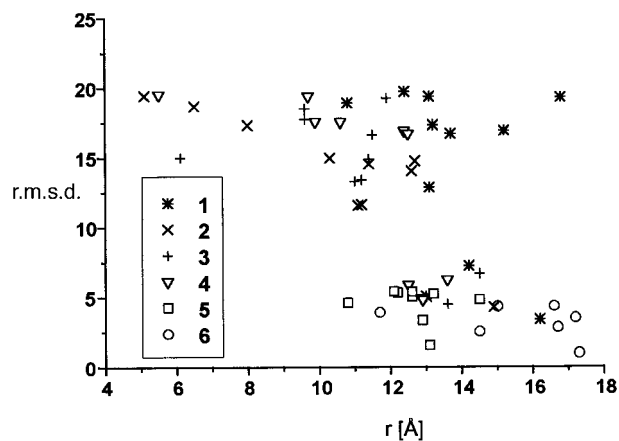


Figure 7 Diagram showing the correlation of the distances between the centres of the aromatic rings and the arbitrary calibrated r.m.s.d. values calculated for torsional angles  $\psi(2)$ ,  $\phi(3)$ ,  $\psi(3)$  and  $\phi(4)$  in the 'spacer' segment.

- (C) Number of NOE contacts found in the spectra of cyclo ( $N^\omega, N^{\omega'}$ -carbonyl-D-Daa<sup>2</sup>, Daa<sup>5</sup>)-enkephalinamides measured in DMSO- $d_6$  (a) and water (b) at 20°C.
- (D) Parameters for the most populated conformations (with populations above 3%) found in DMSO. Values of selected torsional angles for the Tyr, Phe 'spacer', distance between tyrosine and phenylalanine ring centres ( $r$  in Å), relative calculated energy (en in kcal/mol) and relative populations of conformers (pop in %). Torsional angles of the 'spacer' are given in bold.

## Acknowledgements

We would like to acknowledge Dr H. Scheraga (Cornell University) for providing the ECEPPAK

program. We thank Dr Adam Liwo (University of Gdańsk) for the ANALYZE program and for the parameterization of the ureido moiety. We acknowledge Dr Wiktor Koźmiński (University of Warsaw) for his permission to use the PPJ-HMQC sequence prior to its publication. The use of the NMR facility of the Laboratory of Biological NMR, Institute of Biochemistry and Biophysics, Polish Academy of Sciences is gratefully acknowledged. This work was partly supported by State Committee for Scientific Research, grant E-35/SPUB/P04/206/97, the University of Warsaw (BW-1453/12/99), by the Heart and Stroke Foundation of Quebec and by the Medical Research Council of Canada (grant MT-5655).

## REFERENCES

- Schiller PW. Conformational analysis of enkephalin and conformation-activity relationship. In *The Peptides: Analysis, Synthesis, Biology*, vol. 6, Udenfriend S, Meienhofer J (eds). Academic Press: Orlando, FL, 1984; 219–268.
- Pawlak D, Chung NN, Schiller PW, Izdebski J. Synthesis of a novel side-chain to side-chain cyclized enkephalin analogue containing a carbonyl bridge. *J. Peptide Sci.* 1997; **3**: 277–281.
- Izdebski J, Pachulska M, Orłowska A. *N*-cyclohexyl-*N'*-isopropylcarbodiimide: a hybrid that combines the structural features of DCC and DIC. *Int. J. Peptide Protein Res.* 1994; **44**: 414–419.
- Paton WDM. The action of morphine and related substances on contraction and on acetylcholine output of coxially stimulated guinea pig ileum. *Br. J. Pharmacol.* 1957; **12**: 119–127.
- Henderson G, Hughes J, Kosterlitz H. A new example of a morphine sensitive neuroeffector junction. *Br. J. Pharmacol.* 1972; **46**: 764–766.
- Schiller PW, Lipton A, Horrobin DF, Bodanszky M. Unsulfated C-terminal 7-peptide of cholecystokinin: a new ligand of the opiate receptor. *Biochem. Biophys. Res. Commun.* 1978; **85**: 1332–1338.
- DiMaio J, Schiller PW. A cyclic enkephalin analog with high in vitro opiate activity. *Proc. Natl. Acad. Sci. USA* 1980; **77**: 7162–7166.
- Waterfield AA, Leslie FM, Lord JAH, Ling N. Opioid activities of fragments of  $\beta$ -endorphin and of its leucine65-analogue. *Eur. J. Pharmacol.* 1979; **58**: 11–18.
- Sidor M, Wójcik J, Pawlak D, Izdebski J. Conformational analysis of a novel cyclic enkephalin analogue using NMR and EDMC calculations. *Acta. Biochimica Polonica* 1999; **46**: 641–650.
- Aue WP, Bartholdi E, Ernst RR. Two-dimensional spectroscopy. application to nuclear magnetic resonance. *J. Chem. Phys.* 1976; **64**: 2229–2246.
- Bax A, Freeman R. Enhanced NMR resolution by restricting the effective sample volume. *J. Magn. Reson.* 1985; **65**: 355–360.
- Braunschweiler L, Ernst RR. Coherence transfer by isotropic mixing; application to proton correlation spectroscopy. *J. Magn. Reson.* 1983; **53**: 521–528.
- Bothner-By AA, Stephens RL, Lee J-M, Warren CD, Jeanloz RW. Structure determination of a tetrasaccharide: transient nuclear overhauser effects in the rotating frame. *J. Am. Chem. Soc.* 1984; **106**: 811–813.
- Bax A, Davis DG. Practical aspects of two-dimensional transverse NOE spectroscopy. *J. Magn. Reson.* 1985; **63**: 207–213.
- Kay LE, Keifer P, Saarinen T. Piure absorption gradient enhanced heteronuclear single quantum correlation spectroscopy with improved sensitivity. *J. Am. Chem. Soc.* 1992; **114**: 10663–10665.
- Palmer III AG, Cavanagh J, Wright PE, Rance M. Sensitivity improvement in proton-detected two-dimensional heteronuclear correlation NMR spectroscopy. *J. Magn. Reson.* 1991; **93**: 151–170.
- Kontaxis G, Stonehouse J, Laue ED, Keeler J. The sensitivity of experiments which use gradient pulses for coherence-pathway selection. *J. Magn. Reson. Ser. A* 1994; **111**: 70–76.
- Koźmiński W. A pure-phase homonuclear J-modulated HMQC experiment with tilted cross-peak patterns for an accuracy determination of homonuclear coupling constants. *J. Magn. Reson.* 1999; **141**: 185–190.
- Gottlieb HE, Kotlyar V, Nudelman A. NMR chemical shifts of common laboratory solvents as trace impurities. *J. Org. Chem.* 1997; **62**: 7512–7515.
- Wishart S, Bigam CG, Holm A, Hodges RS, Sykes BD.  $^1\text{H}$ ,  $^{13}\text{C}$  and  $^{15}\text{N}$  random coil NMR chemical shifts of the common amino acids. I. Investigations of nearest-neighbor effects. *J. Biomol. NMR* 1995; **5**: 67–81.
- Hoffman RE, Davies DB. Temperature Dependence of NMR Secondary References for  $\text{D}_2\text{O}$  and  $(\text{CD}_3)_2\text{SO}$  Solutions. *Magn. Reson. Chem.* 1988; **26**: 523–525.
- Liwo A, Tempczyk A, Oldziej S, Shenderovich MD, Talluri S, Ciarkowski J, Kasprzykowski S, Łankiewicz L, Grzonka Z. Exploration of the conformational space of oxytocin and arginine-vasopressin using the electrostatically driven Monte Carlo and molecular dynamics methods. *Biopolymers* 1996; **38**: 157–175.
- Ripoll D, Scheraga HA. On the multiple-minima problem in the conformational analysis of polypeptides. II. An electrostatically driven Monte Carlo method – tests on poly(L-alanine). *Biopolymers* 1988; **27**: 1283–1303.
- Ripoll D, Scheraga HA. On the multiple-minima problem in the conformational analysis of polypeptides. IV. Application of the electrostatically driven Monte Carlo method to the 20-residue membrane-bound portion of melittin. *Biopolymers* 1990; **30**: 165–176.
- Nemethy G, Gibson KD, Palmer KA, Yoon ChN, Paterlini G, Zagari A, Rumsey S, Scheraga HA. Energy parameters in polypeptides. 10. Improved geometrical

- parameters and nonbonded interactions for use in the ECEPP/3 algorithm, with application to proline-containing peptides. *J. Phys. Chem.* 1992; **96**: 6472–6484.
26. Vila J, Williams RI, Vasquez M, Scheraga HA. Empirical solvation models can be used to differentiate native from near-native conformations of bovine pancreatic trypsin inhibitor. *Proteins: Struct. Fun. Gen.* 1991; **10**: 199–218.
27. Li Z, Scheraga HA. Monte Carlo-minimization approach to the multiple-minima problem in protein folding. *Proc. Natl. Acad. Sci. USA* 1987; **84**: 6611–6615.
28. Piela L, Scheraga HA. On the multiple-minima problem in the conformational analysis of polypeptides. I. Backbone degrees of freedom for a perturbed  $\alpha$ -helix. *Biopolymers* 1987; **26**: S33–S58.
29. Metropolis NS, Rosenbluth AW, Rosenbluth MN, Teller AH, Teller E. Equation of state calculations by fast computing machines. *J. Chem. Phys.* 1953; **21**: 1087–1092.
30. Spath H. *Cluster Analysis Algorithms*. Halsted Press: New York, 1980; 170–194.
31. Meadows RP, Post CB, Luxon BA, Gorenstein DG. *MORASS 2.1*. Purdue University: W. Lafayette, 1994.
32. Post CB, Meadows RP, Gorenstein DG. On the evaluation of interproton distances for three-dimensional structure by NMR using a relaxation rate matrix analysis. *J. Am. Chem. Soc.* 1990; **112**: 6796–6803.
33. Marquardt DW. An algorithm for least-squares estimation of nonlinear parameters. *J. Soc. Indust. Appl. Math.* 1963; **11**: 431–441.
34. Schiller PW, Nguyen Thi M-D, Lemieux C, Maziak A. A novel side-chain-linked antiparallel cyclic dimer of enkephalin. *FEBS Letters* 1985; **191**: 231–234.
35. Croasmun WR, Carlson RMK. *Two-Dimensional NMR Spectroscopy* (2nd edn). VCH Publishers, Inc.: New York, 1994; 329.
36. Koradi R, Billeter M, Wüthrich K. MOLMOL: a program for display and analysis of macromolecular structures. *J. Mol. Graphics* 1996; **14**: 52–55.